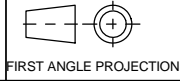


# A2 INSTALLATION DRAWING

If this document is printed in hardcopy, it is for information use only and therefore is not subject to updating controls. Always refer to viewer for latest issue.



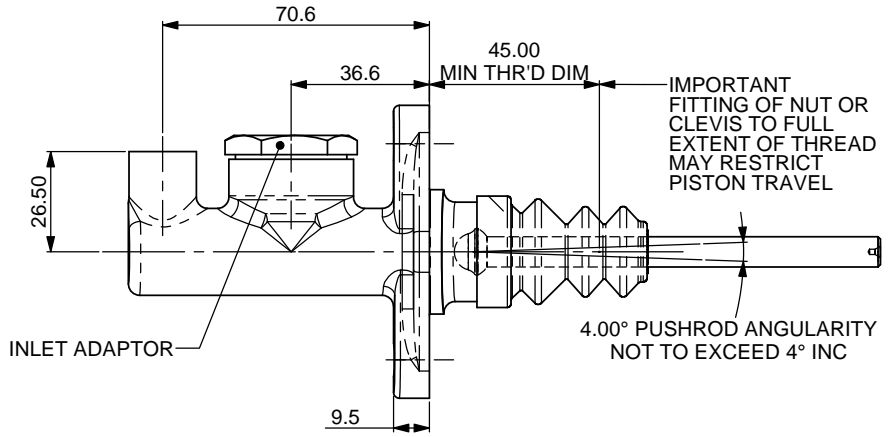
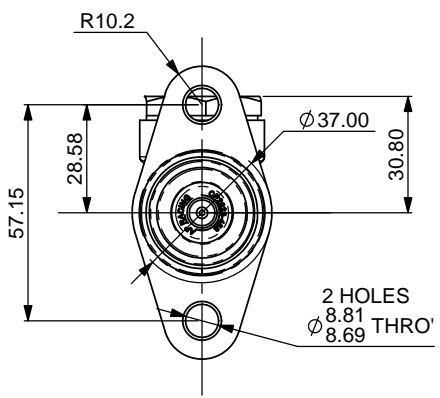
THIS DRAWING IS CONFIDENTIAL AND IS SUPPLIED ON THE EXPRESS CONDITION THAT IT SHALL NOT BE LOANED OR COPIED OR DISCLOSED TO ANY OTHER PERSON OR USED FOR ANY OTHER PURPOSE WITHOUT THE WRITTEN CONSENT OF AP RACING LTD.



**AP Racing**  
Wheler Road  
Coventry  
CV3 4LB

Tel: +44 024 7663 9595  
Fax: +44 024 7663 9559  
e-mail: sales@apracings.co.uk  
Web site: http://www.apracings.com

© AP Racing Ltd. 2005



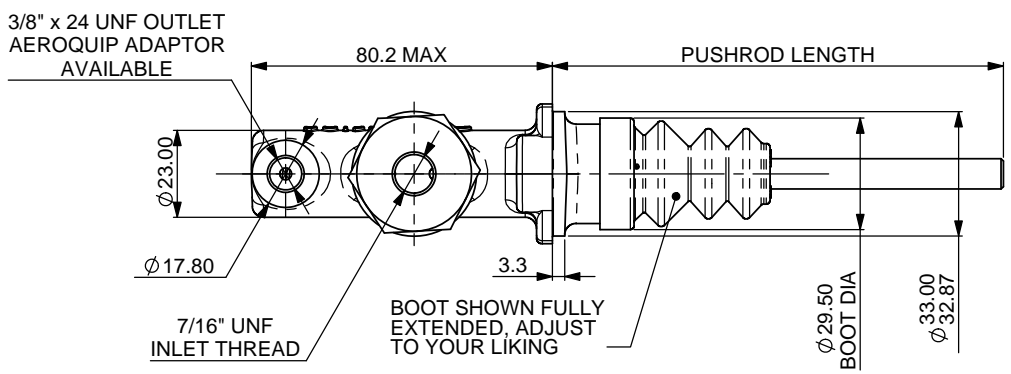
| Issue No. | Date & No.     | Alterations   |  | Zone   | Initials |
|-----------|----------------|---|--|--------|----------|
|           |                | Particulars   |  |        |          |
| 1         | 26/04/13 B6317 | FIRST ISSUE   |  |        | SAT      |
| 2         | 24/02/15 B7242 | BOOT DIA'S Ø29.50 & Ø31.00 ADDED. DRAWING - 1CD. PREVIOUSLY DETAILED CAST BODIES - 77CD FOR FORGED BODIES RENUMBERED TO REPLACE |  | 10D 4B | SAT      |
| 3         | 13/04/16 B7242 | SHEET 1 EXPANDED OVER 3 PAGES TO MAKE BODY & BOOT SIZE COMBINATIONS ACROSS CYL RANGE MORE CLEAR                                 |  |        | SAT      |

**GENERAL DESCRIPTION:**  
LIGHT WEIGHT MASTER CYLINDER FOR USE IN ALL CAR APPLICATIONS. CP2623 MASTER CYLINDER IS SUPPLIED WITH 7/16" THREADED INLET

WEIGHT.....260g (0.573Lb)  
FULL STROKE.....25.4 (1.0")  
TRAVEL TO CUT-OFF SHORT.....0.68 TO 1.09 (0.027" TO 0.043")

BODY MATERIAL.....ALUMINIUM ALLOY  
TYPICAL APPLICATIONS.....FOR USE IN ALL CARS

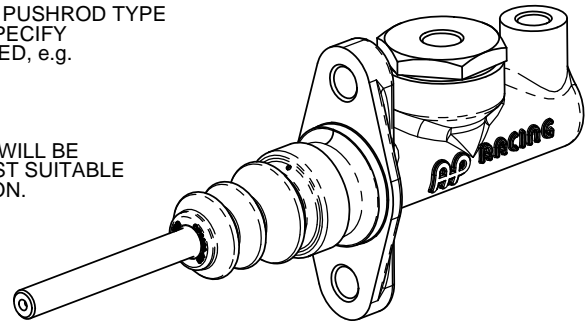
SEE SHEET 4 FOR PUSHROD DETAILS AND INLET OPTIONS



| AVAILABLE SIZES OF CYLINDER |                |           |                |              |
|-----------------------------|----------------|-----------|----------------|--------------|
| PART NUMBER                 | BORE SIZE      | SHEET No. | TIE WRAP       | REPAIR KIT   |
| CP2623-88                   | Ø14            | SHEET 1   | BLACK & ORANGE | CP2623-88RK  |
| CP2623-89                   | Ø15            |           | BLACK & RED    | CP2623-89RK  |
| CP2623-90                   | Ø15.9 (5/8")   |           | BLACK          | CP2623-90RK  |
| CP2623-905                  | Ø16.8          |           | BLACK & YELLOW | CP2623-905RK |
| CP2623-91                   | Ø17.8 (0.70")  |           | BLUE           | CP2623-91RK  |
| CP2623-92                   | Ø19.1 (3/4")   |           | GREEN          | CP2623-92RK  |
| CP2623-93                   | Ø20.6 (13/16") | SHEET 2   | ORANGE         | CP2623-93RK  |
| CP2623-94                   | Ø22.2 (7/8")   |           | RED            | CP2623-94RK  |
| CP2623-95                   | Ø23.8 (15/16") | SHEET 3   | WHITE          | CP2623-95RK  |
| CP2623-96                   | Ø25.4 (1.0")   |           | YELLOW         | CP2623-96RK  |

**ORDERING:**  
WHEN ORDERING PLEASE STATE PUSHROD TYPE AND LENGTH REQUIRED. ALSO SPECIFY WHICH TYPE OF INLET IS REQUIRED, e.g.  
CP2623-90PRT088  
CP2623-90PRT115  
CP2623-90PRT160

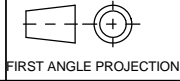
AP RACING TECHNICAL SECTION WILL BE PLEASED TO ADVISE ON THE MOST SUITABLE EQUIPMENT FOR ANY APPLICATION.



|   |              |
|---|--------------|
| SCALE 1:1                               | SHEET 1 OF 4 |
| DRAWN                                   | Steve Thomas |
| APPROVED                                |              |
| DERIVED FROM                            |              |
| TITLE<br>EXTRA SHORT<br>MASTER CYLINDER |              |
| DRG NO.                                 | CP2623-1CD   |

# A2 INSTALLATION DRAWING

If this document is printed in hardcopy, it is for information use only and therefore is not subject to updating controls. Always refer to viewer for latest issue.



THIS DRAWING IS CONFIDENTIAL AND IS SUPPLIED ON THE EXPRESS CONDITION THAT IT SHALL NOT BE LOANED OR COPIED OR DISCLOSED TO ANY OTHER PERSON OR USED FOR ANY OTHER PURPOSE WITHOUT THE WRITTEN CONSENT OF AP RACING LTD.

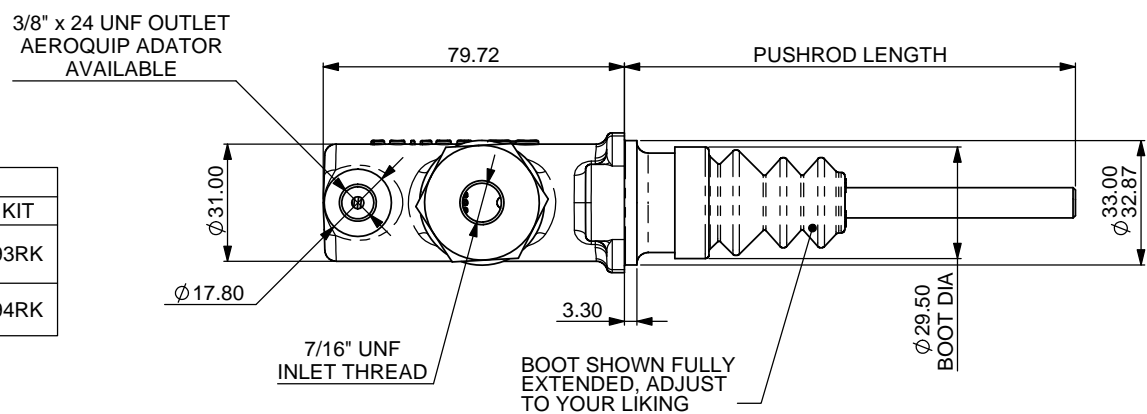
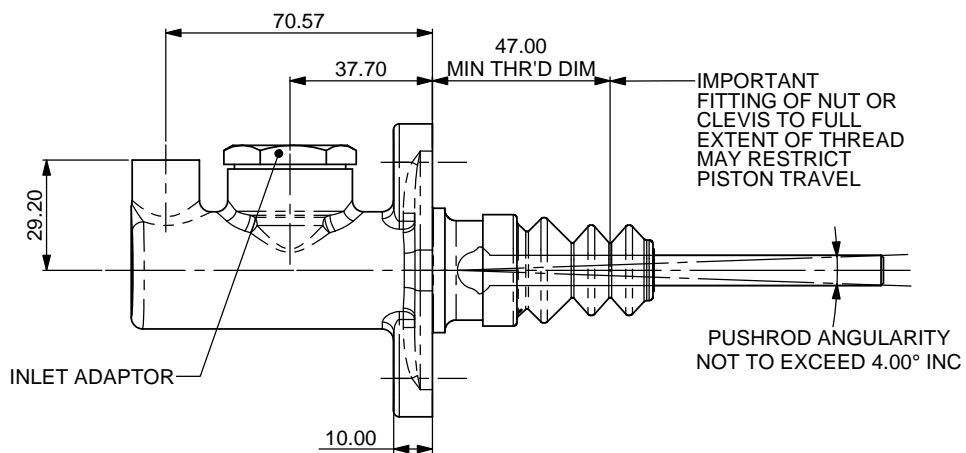
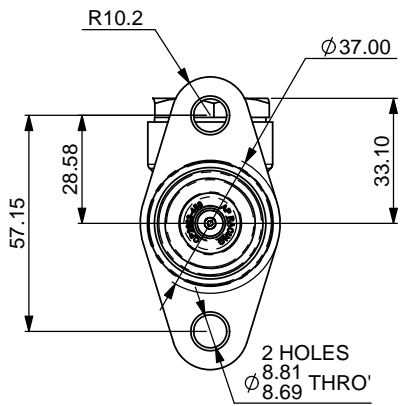


AP Racing  
Wheler Road  
Coventry  
CV3 4LB

Tel: +44 024 7663 9595  
Fax: +44 024 7663 9559  
e-mail: sales@ap racing.co.uk  
Web site: http://www.ap racing.com

© AP Racing Ltd. 2015

| Issue No. | Alterations |             | Zone | Initials |
|-----------|-------------|-------------|------|----------|
|           | Date & No.  | Particulars |      |          |
|           |             |             |      |          |



| AVAILABLE SIZES OF CYLINDER |                |          |             |
|-----------------------------|----------------|----------|-------------|
| PART NUMBER                 | BORE SIZE      | TIE WRAP | REPAIR KIT  |
| CP2623-93                   | Ø20.6 (13/16") | ORANGE   | CP2623-93RK |
| CP2623-94                   | Ø22.2 (7/8")   | RED      | CP2623-94RK |

GENERAL DESCRIPTION:  
LIGHT WEIGHT MASTER CYLINDER FOR USE IN ALL CAR APPLICATIONS. CP2623 MASTER CYLINDER IS SUPPLIED WITH 7/16" THREADED INLET

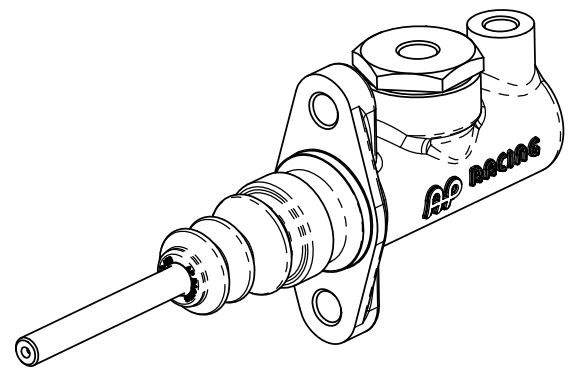
WEIGHT.....300g (0.661Lb)  
FULL STROKE.....25.4 (1.0")  
TRAVEL TO CUT-OFF  
SHORT.....0.68 TO 1.09  
(0.027" TO 0.043")

BODY MATERIAL.....ALUMINIUM ALLOY  
TYPICAL APPLICATIONS.....FOR USE IN ALL CARS

SEE SHEET 4 FOR PUSHROD DETAILS AND INLET OPTIONS

**ORDERING:**  
WHEN ORDERING PLEASE STATE PUSHROD TYPE AND LENGTH REQUIRED. ALSO SPECIFY WHICH TYPE OF INLET IS REQUIRED, e.g.  
CP2623-90PRT088  
CP2623-90PRT115  
CP2623-90PRT160

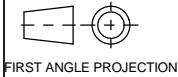
AP RACING TECHNICAL SECTION WILL BE PLEASED TO ADVISE ON THE MOST SUITABLE EQUIPMENT FOR ANY APPLICATION.



|   |              |
|---|--------------|
| SCALE 1:1                               | SHEET 2 OF 4 |
| DRAWN                                   | Steve Thomas |
| APPROVED                                |              |
| DERIVED FROM                            |              |
| TITLE<br>EXTRA SHORT<br>MASTER CYLINDER |              |
| DRG NO.                                 | CP2623-1CD   |

# A2 INSTALLATION DRAWING

If this document is printed in hardcopy, it is for information use only and therefore is not subject to updating controls. Always refer to viewer for latest issue.



THIS DRAWING IS CONFIDENTIAL AND IS SUPPLIED ON THE EXPRESS CONDITION THAT IT SHALL NOT BE LOANED OR COPIED OR DISCLOSED TO ANY OTHER PERSON OR USED FOR ANY OTHER PURPOSE WITHOUT THE WRITTEN CONSENT OF AP RACING LTD.



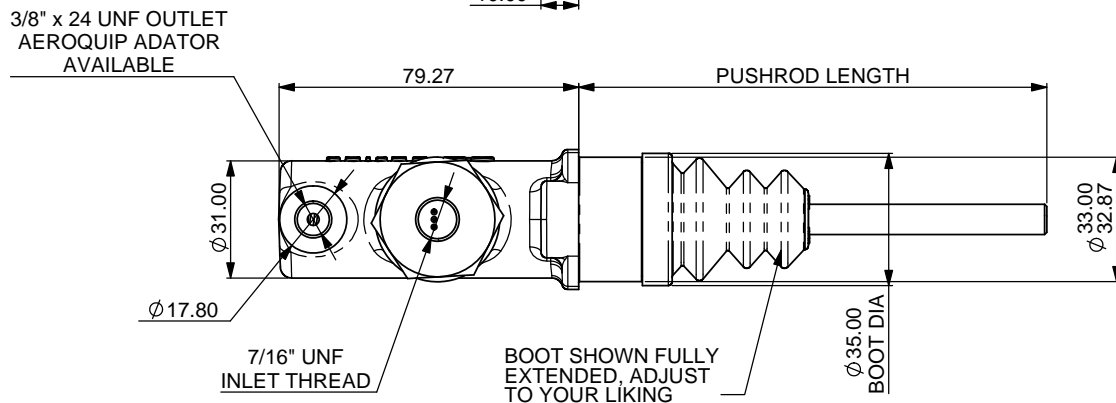
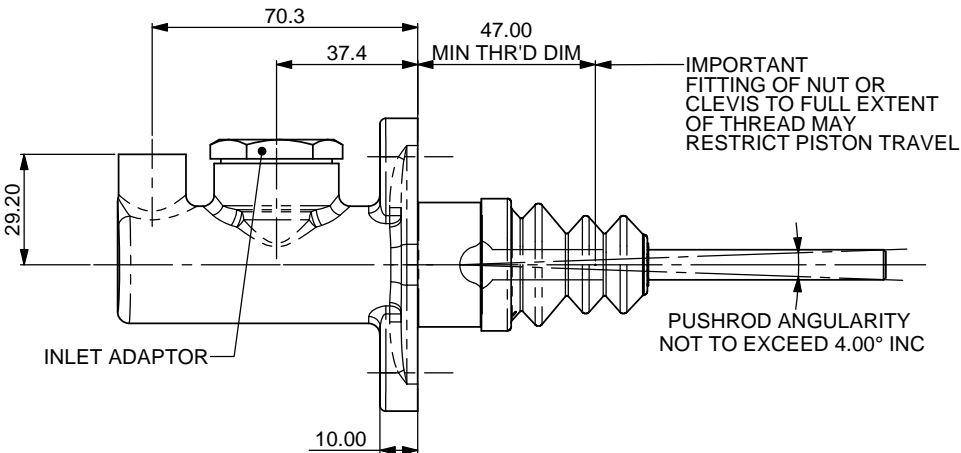
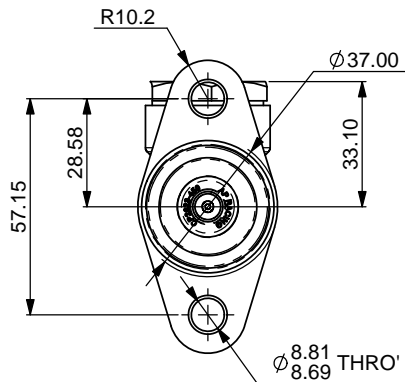
AP Racing  
Wheler Road  
Coventry  
CV3 4LB

Tel: +44 024 7663 9595  
Fax: +44 024 7663 9559  
e-mail: sales@apracings.co.uk

© AP Racing Ltd. 2015

Web site: <http://www.apracings.com>

| Issue No. | Date & No. | Alterations |  | Zone | Initials |
|-----------|------------|-------------|--|------|----------|
|           |            | Particulars |  |      |          |
|           |            |             |  |      |          |



| AVAILABLE SIZES OF CYLINDER |                |          |             |
|-----------------------------|----------------|----------|-------------|
| PART NUMBER                 | BORE SIZE      | TIE WRAP | REPAIR KIT  |
| CP2623-95                   | Ø23.8 (15/16") | WHITE    | CP2623-95RK |
| CP2623-96                   | Ø25.4 (1.0")   | YELLOW   | CP2623-96RK |

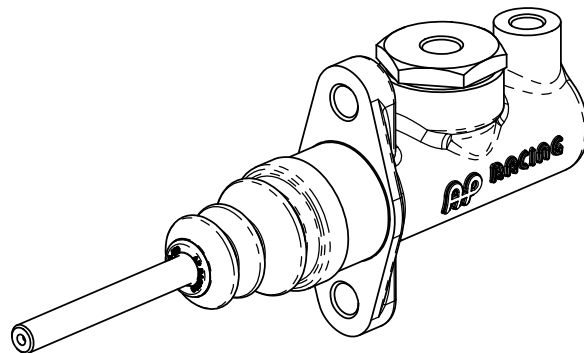
GENERAL DESCRIPTION:  
LIGHT WEIGHT MASTER CYLINDER FOR USE IN ALL CAR APPLICATIONS. CP2623 MASTER CYLINDER IS SUPPLIED WITH 7/16" THREADED INLET

WEIGHT.....340g (0.750Lb)  
FULL STROKE.....25.4 (1.0")  
TRAVEL TO CUT-OFF  
SHORT.....0.68 TO 1.09  
(0.027" TO 0.043")  
BODY MATERIAL.....ALUMINIUM ALLOY  
TYPICAL APPLICATIONS.....FOR USE IN ALL CARS

SEE SHEET 4 FOR PUSHROD DETAILS AND INLET OPTIONS

**ORDERING:**  
WHEN ORDERING PLEASE STATE PUSHROD TYPE AND LENGTH REQUIRED. ALSO SPECIFY WHICH TYPE OF INLET IS REQUIRED, e.g.  
CP2623-90PRT088  
CP2623-90PRT115  
CP2623-90PRT160

AP RACING TECHNICAL SECTION WILL BE PLEASED TO ADVISE ON THE MOST SUITABLE EQUIPMENT FOR ANY APPLICATION.



SCALE 1:1 SHEET 3 OF 4

DRAWN Steve Thomas

APPROVED

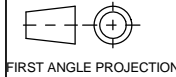
DERIVED FROM

TITLE  
EXTRA SHORT  
MASTER CYLINDER

DRG NO. CP2623-1CD

# A2 INSTALLATION DRAWING

If this document is printed in hardcopy, it is for information use only and therefore is not subject to updating controls. Always refer to viewer for latest issue.



THIS DRAWING IS CONFIDENTIAL AND IS SUPPLIED ON THE EXPRESS CONDITION THAT IT SHALL NOT BE LOANED OR COPIED OR DISCLOSED TO ANY OTHER PERSON OR USED FOR ANY OTHER PURPOSE WITHOUT THE WRITTEN CONSENT OF AP RACING LTD.



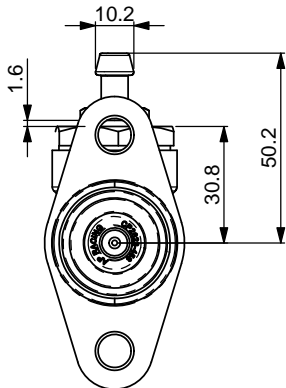
AP Racing  
Wheler Road  
Coventry  
CV3 4LB

Tel: +44 024 7663 9595  
Fax: +44 024 7663 9559  
e-mail: sales@ap racing.co.uk

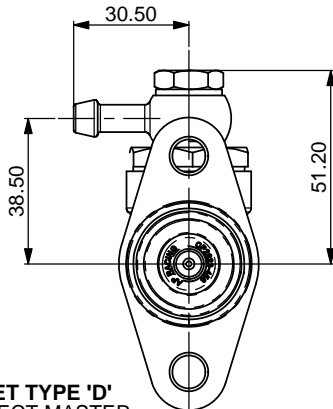
© AP Racing Ltd. 2005

Web site: <http://www.apracing.com>

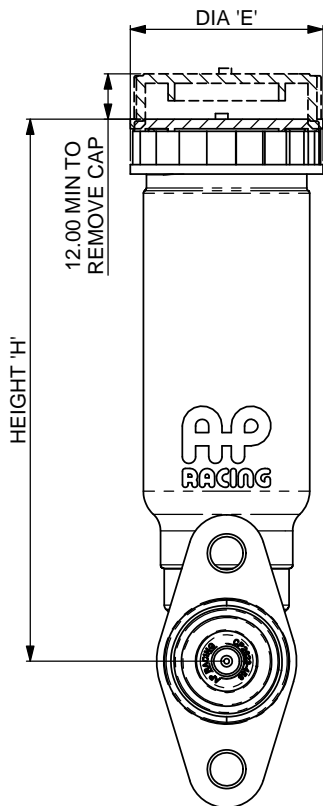
## ALTERNATIVE INLET OPTIONS



**INLET TYPE 'A'**  
SELECT MASTER CYLINDER WITH INLET TYPE 'B', PLUS INLET ADAPTOR KIT PART NUMBER CP2623-30



**INLET TYPE 'D'**  
SELECT MASTER CYLINDER WITH INLET TYPE 'B', PLUS INLET ADAPTOR KIT PART NUMBER CP2623-41

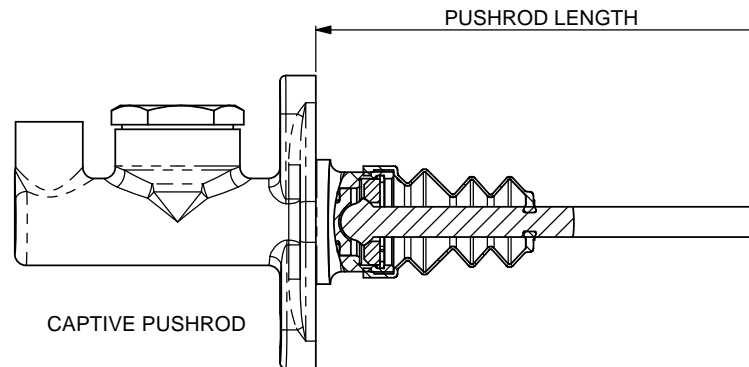


**INLET TYPE 'C'**  
SELECT MASTER CYLINDER WITH INLET TYPE 'B', PLUS RESERVOIR FROM PART NUMBER CHART BELOW.

PLEASE NOTE:  
TO FIT CP4709 TYPE RESERVOIRS THE INLET ADAPTOR AND COPPER GASKET ARE TO BE REMOVED. FITTING INSTRUCTIONS SUPPLIED WITH RESERVOIR.

| RESERVOIR PART No. | HEIGHT 'H' mm (in) | DIA 'E' mm (in) | VOLUME cm <sup>3</sup> (in <sup>3</sup> ) |
|--------------------|--------------------|-----------------|---|
| CP4709-10          | 194 (7.64")        | 51 (2.0")       | 183 (11.1)                                |
| CP4709-11          | 144 (5.67")        | 51 (2.0")       | 123 (7.5)                                 |
| CP4709-12          | 104 (4.09")        | 51 (2.0")       | 75 (4.5)                                  |
| CP2293-163         | 167 (6.57")        | 89 (3.5")       | 340 (20.7)                                |

OTHER RESERVOIR OPTIONS AVAILABLE, SEE AP RACING HYDRAULIC ACTUATION CATALOGUE



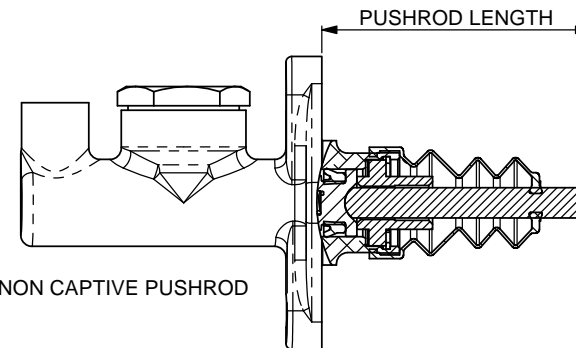
CAPTIVE PUSHROD

PUSHRODS ARE AVAILABLE IN THE FOLLOWING LENGTHS:  
88mm (3.46"), 115mm (4.53") AND 160mm (6.3").  
NON-STANDARD LENGTHS AVAILABLE ON REQUEST.

CAPTIVE PUSHROD TYPES:  
PRT - PUSH ROD THREADED 5/16" UNF  
PRM - PUSH ROD THREADED M8 x 1.25  
PUSHROD LENGTHS ARE MEASURED FROM THE MOUNTING FLANGE.

IMPORTANT NOTE:  
CP2623 MASTER CYLINDER IS INDIVIDUALLY SHIMMED DURING ASSEMBLY TO MINIMISE FREE PLAY. THEREFORE PUSH RODS SHOULD NOT BE SWITCHED BETWEEN INDIVIDUAL MASTER CYLINDER ASSEMBLIES.

PUSHROD EXTENTIONS THAT GIVE A TOTAL LENGTH OF OVER 200mm ARE NOT RECOMMENDED. IT IS THE CUSTOMERS RESPONSIBILITY TO CHECK SUITABILITY OF PUSHROD AND EXTENTION PIECES TO TAKE APPLIED LOADS.



NON CAPTIVE PUSHROD

NON CAPTIVE PUSHRODS:  
CP2623 MASTER CYLINDER IS AVAILABLE WITH NON CAPTIVE PUSHRODS. THIS ENABLES THE REMOVAL OF THE MASTER CYLINDER WITHOUT NEED TO REMOVE THE PUSHROD FROM THE BRAKE PEDAL OR BALANCE BAR ASSEMBLY. PUSH RODS ARE AVAILABLE IN LENGTHS EQUIVALENT TO THOSE SHOWN ABOVE.  
PUSHROD TYPES:  
NCT - NON CAPTIVE PUSHROD THREADED 5/16" UNF  
NCM - NON CAPTIVE PUSHROD THREADED M8 x 1.25

| Issue No. | Alterations |                         | Zone | Initials |
|-----------|-------------|-------------------------|------|----------|
|           | Date & No.  | Particulars             |      |          |
|           |             | SEE SHEET 1 FOR DETAILS |      |          |

|   |              |
|---|--------------|
| SCALE 1:1                               | SHEET 4 OF 4 |
| DRAWN                                   | Steve Thomas |
| APPROVED                                |              |
| DERIVED FROM                            |              |
| TITLE<br>EXTRA SHORT<br>MASTER CYLINDER |              |
| DRG NO.                                 | CP2623-1CD   |